

Standby Power Rating

45 kW 60 Hz

Liquid Cooled
Gas Engine
Generator Sets

Standby Power Rating

45 kW 60 Hz LP

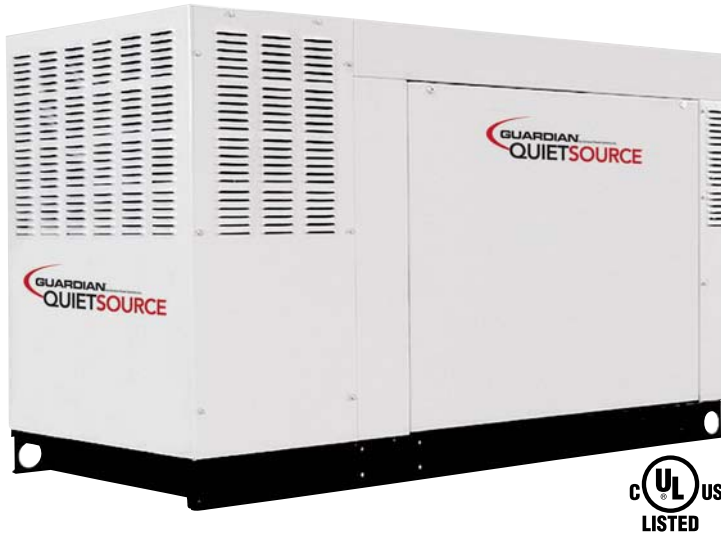
43 kW 60 Hz NG

Model Numbers:

05261 (Tan - Steel)

05261T (Tan - Steel)

05262 (Gray - Aluminum)



Whisper-Test™

Low Noise Exercise
- 63 dB(A) at 23 feet

UL 2200 Listed

Power Matched

GENERAC 2.4L ENGINE

Naturally Aspirated

2 Year Limited Warranty

Model 5261T is equipped with a 200 amp
NEMA 3R Transfer Switch with
Service Disconnect. Transfer Switches are
available for Models 5261 and 5262.

STANDARD EQUIPMENT

- All input connections in one single area
- High coolant temperature shutdown
- Low oil pressure shutdown
- Low coolant level automatic shutdown
- Overspeed automatic shutdown
- Crank timer
- Exercise timer
- Oil drain extension
- Cool flow radiator
- Closed coolant recovery system
- Watertight state of the art electrical connectors
- Mainline circuit breaker
- Radiator drain extension
- Battery charge alternator
- 2 Amp static battery charger
- Battery cables
- Battery rack
- Fan and belt guards
- Isochronous governor
- UV/Ozone resistant hoses

FEATURES

- Innovative design and fully prototype tested
- UL2200 Listed
- Solid state frequency compensated voltage regulator
- Dynamic and static battery charger
- Sound attenuated acoustically designed enclosure
- Whisper-Test™ Mode for low noise level exercise
- Acoustically designed engine cooling system
- High flow low noise factory engineered exhaust system
- State of the art R100 digital control system
- Watertight electrical connectors
- Rodent proof construction
- High efficiency, low distortion Generac designed alternator
- Vibration isolated from mounting base
- Matching Generac transfer switches engineered and tested to work as a system
- All components easily accessible for maintenance
- Electrostatically applied powder paint

GUARDIAN by Generac Power Systems, Inc.
QUIETSOURCE™

APPLICATION & ENGINEERING DATA

STANDBY 45 kW



GENERATOR SPECIFICATIONS

TYPE.....	Synchronous
ROTOR INSULATION.....	Class H
STATOR INSULATION.....	Class H
TOTAL HARMONIC DISTORTION.....	<5%
TELEPHONE INTERFERENCE FACTOR (TIF).....	<50
ALTERNATOR OUTPUT LEADS 3 PHASE.....	4 wire
BEARINGS.....	Sealed Ball
COUPLING.....	Flexible Disc
LOAD CAPACITY (STANDBY RATING).....	45 kW
EXCITATION SYSTEM.....	Direct

NOTE: Generator rating and performance in accordance with ISO8528-5, BS5514, SAE J1349, ISO3046, and DIN6271 standards.

VOLTAGE REGULATOR

TYPE.....	Electronic
SENSING.....	Single Phase
REGULATION.....	± 1%
FEATURES.....	V/F Adjustable Adjustable Voltage and Gain LED Indicators

GENERATOR FEATURES

- Revolving field heavy duty generator
- Directly connected to the engine
- Operating temperature rise 120 °C above a 40 °C ambient
- Insulation is Class H rated at 150 °C rise
- All models are fully prototyped tested

CONTROL PANEL FEATURES

- SEVEN LED INDICATOR LIGHTS
 - System ready
 - Low fuel pressure
 - Low battery
 - Low oil pressure
 - High coolant temp/low coolant temp
 - Overspeed
 - Overcrank
- INTERNAL FUNCTIONS:
 - 3 position switch (auto, off and manual)
 - 2 wire start for any transfer switch
 - Communicates with the Generac RTS transfer switch
 - Built-in 7 day exerciser
 - Selectable engine speed at exercise
 - Governor controller is built into the master control board
 - Temperature range -40 °C to 70 °C
- ADDITIONAL FUNCTIONS
 - Utility sensing
 - Delay on utility failure for engine start
 - Engine warm-up before transfer
 - Delay to retransfer to utility
 - Engine cooldown timer
 - Exerciser not set

ENGINE SPECIFICATIONS

MAKE.....	Generac
MODEL.....	Inline 4
CYLINDERS.....	4
DISPLACEMENT.....	2.4 Liter, 146 cu. in.
BORE.....	3.41
STROKE.....	3.94
COMPRESSION RATIO.....	8.5:1
INTAKE AIR SYSTEM.....	Naturally Aspirated
VALVE SEATS.....	Precision ground
LIFTER TYPE.....	Overhead Valve Push Rod, Hydraulic

GOVERNOR SPECIFICATIONS

TYPE.....	Electronic
FREQUENCY REGULATION.....	Isochronous
STEADY STATE REGULATION.....	± 0.25%

ENGINE LUBRICATION SYSTEM

OIL PUMP.....	Gear
OIL FILTER.....	Full flow spin-on cartridge
CRANKCASE CAPACITY.....	4 Quarts

ENGINE COOLING SYSTEM

TYPE.....	Pressurized Closed
WATER PUMP.....	Belt driven
FAN SPEED.....	2060
FAN DIAMETER.....	22 inches
FAN MODE.....	Pusher

FUEL SYSTEM

FUEL TYPE.....	Natural gas, propane vapor
CARBURETOR.....	Down Draft
SECONDARY FUEL REGULATOR.....	Standard
FUEL SHUT OFF SOLENOID.....	Standard
OPERATING FUEL PRESSURE.....	5" - 14" H ₂ O

ELECTRICAL SYSTEM

BATTERY CHARGE ALTERNATOR.....	12V 30 Amp
STATIC BATTERY CHARGER.....	2 Amp
RECOMMENDED BATTERY.....	Group 26, 525CCA
SYSTEM VOLTAGE.....	12 Volts

Rating definitions - Standby: Applicable for supplying emergency power for the duration of the utility power outage. No overload capability is available for this rating. (All ratings in accordance with BS5514, ISO3046 and DIN6271). (All ratings in accordance with BS5514, ISO3046, ISO8528 and DIN6271).

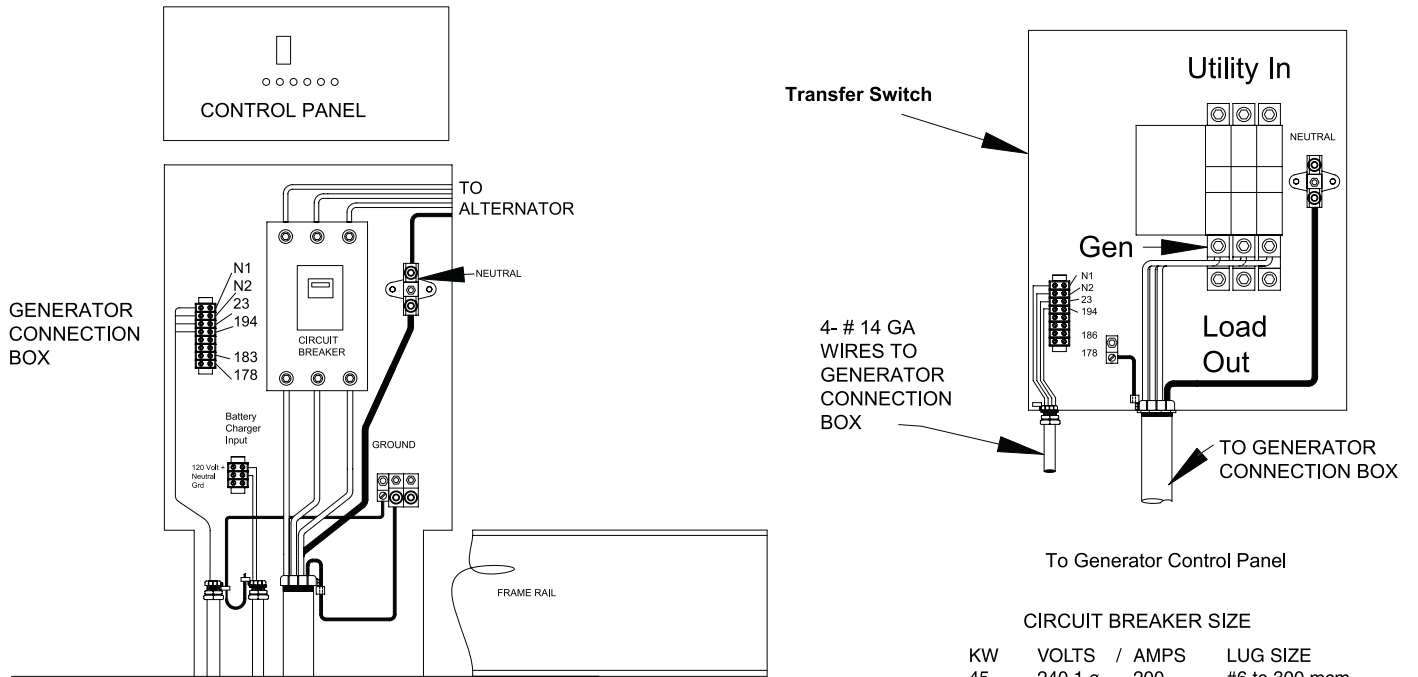
OPERATING DATA

		STANDBY 45		
KW RATING		45		
ENGINE SIZE		2.4 Liter		
GENERATOR OUTPUT VOLTAGE/KW - 60Hz		KW	AMP	CB Size
120/240V, 1-phase, 1.0 pf LP		45	187.5	200
120/240V, 1-phase, 1.0 pf NG		43	179.2	200
GENERATOR LOCKED ROTOR KVA AVAILABLE @ VOLTAGE DIP OF 35% Single phase		100		
ENGINE FUEL CONSUMPTION (Natural Gas) (Propane)		Natural Gas (ft ³ /hr.)	Propane (gal/hr.) cu ft/hr	
Exercise cycle		102	1.11	40.4
25% of rated load		194	2.12	77.1
50% of rated load		373	4.07	148
75% of rated load		520	5.67	206.3
100% of rated load		720	7.86	286
ENGINE COOLING				
Air flow (inlet air including alternator and combustion air)		ft ³ /min.	2,725	
System coolant capacity		US gal.	3.0	
Heat rejection to coolant		BTU/hr.	173,000	
Max. operating air temp. on radiator		°C (°F)	60 (150)	
Max. ambient temperature		°C (°F)	50 (140)	
COMBUSTION AIR REQUIREMENTS				
Flow at rated power 60 Hz		cfm	144	
SOUND EMISSIONS IN DBA				
Exercising at 7 meters		63		
Full load at 7 meters		75		
EXHAUST				
Exhaust flow at rated output 60 Hz		cfm	429	
Exhaust temp. at muffler outlet		°F	1150	
ENGINE PARAMETERS				
Rated synchronous RPM		60 Hz	3600	
HP at rated KW		60 Hz	71	
POWER ADJUSTMENT FOR AMBIENT CONDITIONS				
Temperature Deration		3% for every 10 °C above - °C	25	
		1.65% for every 10 °F above - °F	77	
Altitude Deration		1% for every 100 m above - m	183	
		3% for every 1000 ft. above - ft.	600	
TRANSFER SWITCH SPECIFICATIONS <i>If so equipped</i>				
No. of Poles		2		
Current Rating (amps)		200		
Voltage Rating (VAC)		250		
Service Disconnect Breaker		200 Amp HACR Type		
Utility Voltage Monitor (fixed)				
		80%		
		60%		
Enclosure - NEMA 3R		Standard		
Return to Utility		15 seconds		
Exerciser 15 minute weekly		Standard		
UL 1008 Listed		Standard		
Dimensions (H" x W" x D")		20 x 15 x 7		
Weight		50 lbs.		

RATING: All single phase units are rated at 1.0 power factor. STANDBY RATING: Standby ratings apply to installations served by a reliable utility source. The standby rating is applicable to varying loads for the duration of a power outage. There is no overload capability for this rating. Ratings are in accordance with ISO-3046-1. Design and specifications are subject to change without notice. Maximum wattage and current are subject to and limited by such factors as fuel Btu content, ambient temperature, altitude, engine power and condition, etc.

INTERCONNECTIONS

STANDBY 45 kW

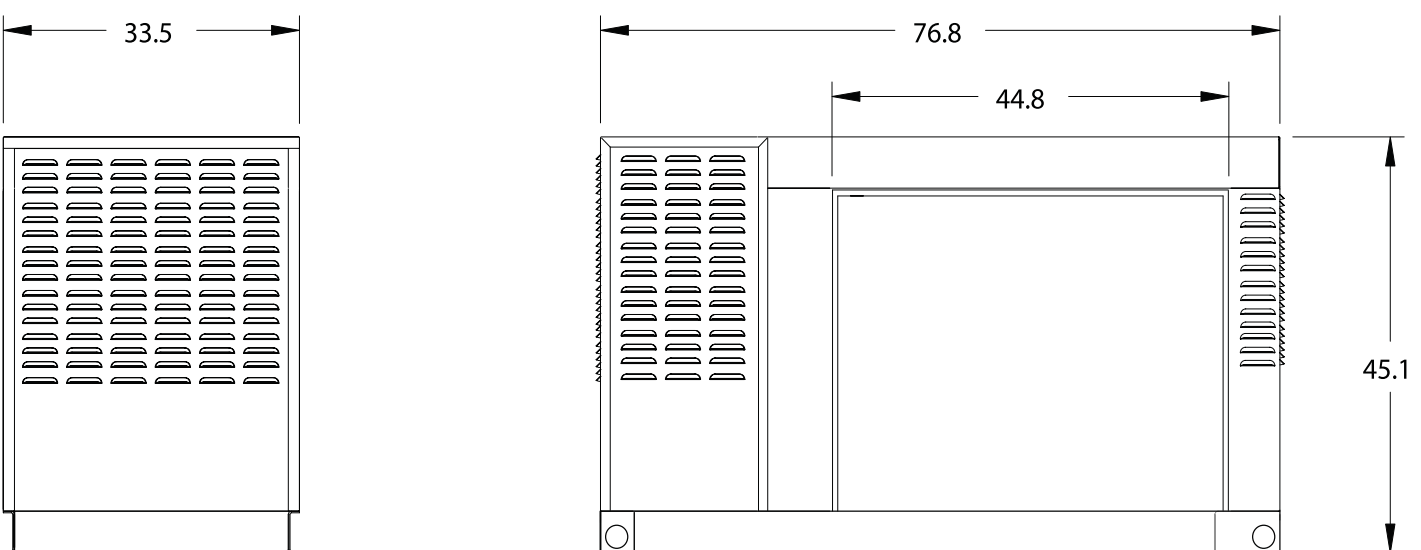


Ground Level Concrete Slab

STUB-UP AREA
See Install Dwg for Dimensions

Installation Drawing Ref. No. OF6286

INSTALLATION LAYOUT



UNIT WEIGHT: Steel 1558 lbs.
Aluminum 1441 lbs.

GENERAC® POWER SYSTEMS, INC. • P.O. BOX 297 • WHITEWATER, WI 53190
www.guardiangenerators.com